



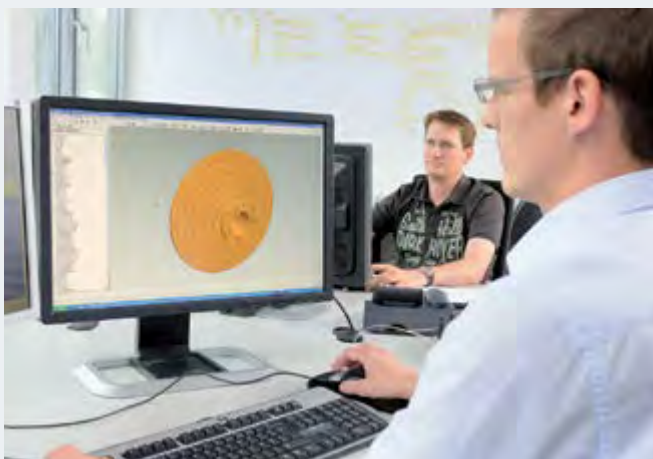
# Industrial Rolling Shutters and Rolling Grilles

Sturdy and reliable in tough daily use

**HÖRMANN**

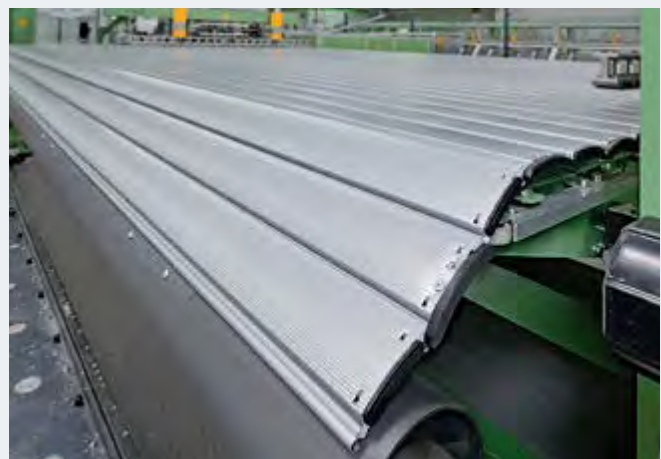
# Hörmann brand quality

Reliable and oriented towards the future



## In-house product development

At Hörmann, innovation is produced in-house – highly qualified employees of the development department are in charge of product optimisation and new developments. This results in market-ready, high-quality products that are very popular around the globe.



## Modern manufacturing

Most of the essential door components, such as profiles, side guides, support brackets, fittings and control technology are developed and produced by Hörmann - not bought in from here, there and everywhere. This ensures greatest compatibility between the door, operator and control. The certified Quality Management System guarantees the highest level of quality from development, through production to shipping.

**This is Hörmann quality – German Quality.**



As Europe's leading manufacturer of doors, hinged doors, frames and operators, we are committed to high product and service quality. This is how we set standards on an international scale.

Highly-specialised factories develop and manufacture construction components that are characterised by excellent quality, functional safety and a long service life.

Our presence in the global economy's key regions makes us a strong, future-oriented partner for industrial and public construction projects.



It goes without saying that spare parts for doors, operators and controls are original Hörmann parts that come with a guaranteed availability of 10 years.



### Competent advice

Experienced specialists within our customer-oriented sales organisation accompany you from the planning stage, through technical clarification up to the final building inspection. Complete working documentation, such as technical manuals, is not only available in printed form, but is always accessible and up-to-date at [www.hoermann.com](http://www.hoermann.com)



### Fast service

Our extensive service network means that we are always nearby and at your service around the clock. This is a major advantage in terms of inspections, maintenance and repairs.

# Good reasons to try Hörmann

Innovations from the market leader



Only from Hörmann



# 1

## Innovative tension spring assembly

### Safe and proven

Manual door opening and closing is facilitated significantly by the tension spring assembly. Even the CS rolling shutters up to the maximum size can be moved with little force. For rolling shutters / rolling grilles with an optional operator, the tension spring assembly reduces wear on the mechanical door elements and operator technology.

# 2

## Operational safety through power limit

### As standard with CS rolling shutter / rolling grille

In combination with operator WA 300 R S4, the CS rolling shutter / rolling grille features high safety during opening and closing processes. Thanks to the standard power limit in the "Open" and "Close" directions, certain curtain variants and size ranges do not require the installation of a closing edge safety device to meet the requirements of DIN EN 12453.

**! Only from Hörmann**



### **3 New! High-speed rolling shutter above traditional class**

**Revolutionary design on the high-speed rolling shutter SR 9000**  
SR 9000 is a new door type which beyond traditional rolling shutter. max. open speed up to 1.0 m/s, self-monitoring safety light grille in the closing zone as standard, this revolutionary high performance rolling shutter is the model to choose as an alternative to traditional rolling shutters in high cycle applications.

### **4 Well thought-out door and operator concept**

**Optimally matched to one another**  
Precise matching of the door, operator and control ensure the smooth operation of the rolling shutter / rolling grille. With a complete door solution from a single source, these components form the perfect team.

While Hörmann rolling shutters and rolling grilles stand for durability and functional safety, they are also trouble-free to maintain.

# Application areas

A matching door type for every purpose

## Compact, space-saving construction for shopping centres

CS rolling shutter / rolling grille

You can find additional door solutions for store entrances in the brochure "RollMatic Rolling Grille".



## Optimised door systems for logistics

CS rolling shutter / rolling grille  
SR 9000 high-speed rolling shutter



## Easy operation for commercial buildings, warehouses and agriculture

CS rolling shutter / rolling grille



## Safe night door for underground garages and multi- storey car parks

CS rolling shutter / rolling grille  
Classic rolling shutter /  
rolling grille



## Large doors for industrial halls and disposal companies

Classic rolling shutter



## Ideal solutions for special requirements

Classic rolling shutter /  
rolling grille



## CS rolling shutter / rolling grille

Maximum comfort for door openings up to 6000 × 4500 mm



### Warehouses

Easy operation as a manual rolling shutter with tension spring assembly. Simple retrofitting of the WA 300 R S4 operator.

**Also manually operated**  
As rolling shutter up to 5000 mm x 4500 mm,  
as rolling grille up to 6000 mm x 4500 mm



#### **Logistics**

The optimal solution for low to medium-traffic, as a manually operated door or with operator WA 300 R S4.



#### **Agriculture**

This robust, inexpensive solution with steel profiles is available for door widths up to 5000 mm.



#### **Shopping centres**

This door features a space-saving design and easy operation, e.g. with emergency opening from the outside for smaller store entrances. It is also available with a rolling grille curtain in up to 6000 mm door width.

# CS rolling shutter / rolling grille

Manually operated or optionally with operator WA 300 R S4



The front image shows a CS rolling shutter for manual operation; the variant with an optional operator WA 300 R S4, including cover, is shown in the rear.

# Tension spring assembly

For easy manual opening and closing,  
as well as door travel that is gentle on the operator



## Tension spring assembly

The innovative tension spring assembly assists during manual opening and closing. Therefore rolling shutters and rolling grilles can be operated with little force.

## Chain hoist

The CS rolling shutter and rolling grille can also be easily opened and closed via the interior and exterior handle. Operation is particularly easy with an optional chain hoist, which we recommend for doors higher than 3500 mm.



## Faster fitting

The entire door construction, including support brackets and side guides, is fitted as a frame unit to the building structure. This makes fitting easier and shortens the fitting time. In addition, a smaller space requirement of only 165 mm facilitates fitting in the tightest of spaces.

Plastic runners and brush seals in the aluminium side guides ensure quiet door travel.

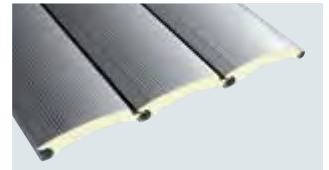


## Optional cover

To prevent accidental reaching into the door barrel, doors under 2.5 m height require a shaft cover, in accordance with the requirements of EN 13241-1. The stable door and operator technology cover provides continuous protection against dust and dirt.

## Curtain variants

Size range  
(B × H, max.)



**Decotherm S, steel**  
Max. width 5000 mm  
Max. height 4500 mm



**HR 120 A, aluminium**  
5000 mm × 4500 mm



**HR 120 aero, aluminium**  
5000 mm × 4500 mm



**HG-L, aluminium**  
6000 mm × 4500 mm



**HG 75, aluminium**  
6000 mm × 3500 mm

## Overview of curtains

From page 26

## Operators and controls

From page 36

# Classic rolling shutter

Individual solutions for door openings



Ideal solution for opening width up to 8000 mm



**Disposal firms**

Robust construction for hard environment



**Industrial project**

Good choice for workshop with big opening size



**Commercial warehouse**

Good thermal insulation and easy to fit.

# Classic rolling shutter

Sturdy and reliable





### Elegant concave surfaces

The concave interior and exterior surfaces of the profiles ensure extremely good roll-up action. Optimally designed hinges reduce heat loss and enable a connection between the curtain and barrel without the usual pressure and wear marks.



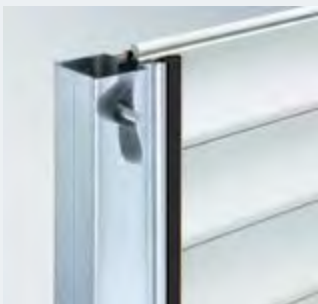
### Window elements

Decotherm S can be equipped with window elements. Double-skinned window elements consist of transparent, impact-resistant polycarbonate with high-quality cover frames (similar to RAL 9006). The benefit of these frames: The PU foam is no longer visible, noise and abrasion are reduced.



### Standard with closing edge safety device

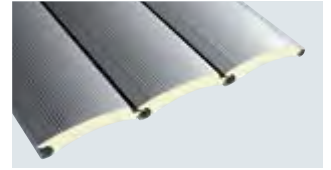
The standard safety device provides you with more security. The sensors in the bottom rubber sealing monitor the bottom edge of the door and, as a result, obstructions and persons are quickly detected and the door starts to reverse as soon as it makes contact.



### Side guides and wind locks

The articulated design of the wind locks enables the rolling shutter to withstand extreme wind pressure. Plastic runners with intergrated brush seals ensure quiet door travel.

### Curtain size range



### Decotherm S, steel

Max. width 8000 mm

Max. height 7750 mm

Max. area 40 m<sup>2</sup>

### Windows



Standard arrangement



Logistics arrangement

### Overview of curtains

From page 26

### Operators and controls

From page 36

# Classic Rolling Shutter / Rolling Grille

Individual solutions for opening widths up to 30 m



## Large doors as coupled constructions (SSG)

Up to three rolling shutters or rolling grilles can be coupled in the opening up to 30 m wide and 6 m high using the SSG system. Once the doors have been opened, the mullions are unlocked manually and slid over to the side park positions.



## Large doors for wide door openings and high wind loads

The Wind Protection System (WPS) increases the rigidity of the door against wind load. An aluminium telescopic support reliably braces the closed door. As a result, wind load classes 2 and higher can also be achieved for door widths above 10 m.



#### Door opening with sloping ground

A chamfered bottom profile compensates for differences in height with sloping ground; steps can also be bridged this way.



#### External rolling shutters

External rolling shutters are the perfect solution for hall openings that lack interior sideroom. If there is no overhead covering, we offer a special curtain cover in either galvanized sheet steel or stainless sheet steel.

# Classic rolling shutter / rolling grille

Ideal solution for bigger opening size



Classic rolling shutter with direct drive operator



## Less required headroom



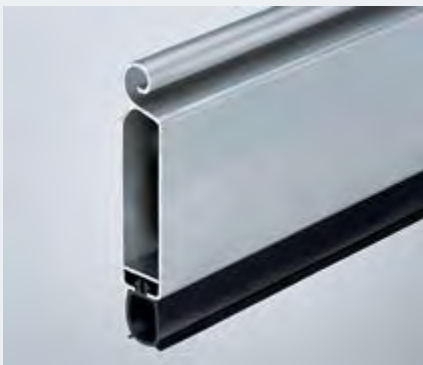
### Advanced anchor technology for variable support

Variable 30-mm increments, installation and service-friendly screw connections produce a close fit. A neat solution, both visually and thermally.



### Weld-on spacer brackets for steel structures

The spacer brackets can be directly welded onto the steel structure. For steel construction halls, the weld-on spacer brackets optimally complement the anchor technology.

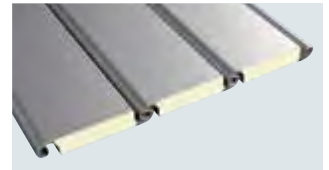


### Bend-resistant bottom profiles

A stable aluminium profile strengthens the curtain. A weather-resistant, flexible EPDM tubular seal prevents penetration of dirt and rain, compensates for unevenness in the floor and, in the end-of-travel position, does not produce any noise when it comes into contact with the floor.

## Curtain variants

Size range  
(B × H, max.)



**HR 116 A, aluminium**  
11750 mm × 9000 mm



**HR 120 A, aluminium**  
**HR 120 S, steel**  
11750 mm × 8000 mm



**HR 120 aero, aluminium**  
11750 mm × 8000 mm



**HG-V, aluminium (reinforced)**  
11750 mm × 8000 mm  
**HG-S, steel**  
11750 mm × 8000 mm

## Overview of curtains

From page 26

## Operators and controls

From page 36

# SR 9000 high-speed rolling shutter

New innovative rolling shutter generation



Opening speed up to 1.0 m/s (based on door height 4500 mm)



**Factories**

High opening and closing speeds up to 1.0 m/s, optimize your operations and reduce heat losses.



**Logistics**

High safety ensure smooth passage

# SR 9000 high-speed rolling shutter

More flexibility, more efficiency

Standard FU operator with  
soft start and soft stop





## The safe and fast rolling shutter with FU operator



### Aluminium side guide

- Only 92 mm side space requirement for all door sizes
- Fitted quickly and easily directly to the building structure without anchor technology

### Guide channel that is gentle on the door

- Less wear on the door curtain due to newly developed flexible holders on the top of the frame
- Service-friendly, easy dismantling



### Limited sideroom

- Bearing side max. 210 mm
- Operator side max. 430 mm

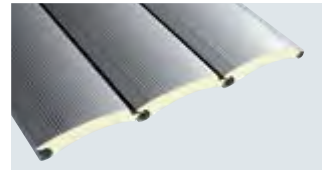


### High operation and safety performance

- Opening speed up to 1.0 m/s
- FU operator with soft start and soft stop
- Safety light grille monitor the door way
- L pads on the curtain interior for quiet door travel
- **Window elements are optionally available**

### Curtain variants

Size range  
(W x H, max.)



**Decotherm S, steel**  
5000 \* 4500 mm

### Windows



Standard arrangement



Logistics arrangement

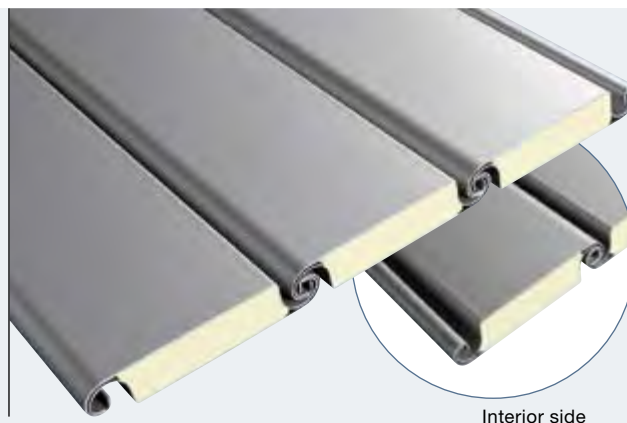
# Rolling shutter laths

## Decootherm S, HR 116 A

Double-skinned and thermally insulated



Interior side



Interior side

### Decootherm S, steel

Hörmann has decisively improved its rolling shutters with this high-tech profile. A combination of a thoroughly optimised profile geometry with special steel alloys shows what is possible today in rolling shutter construction. Special "full hard" steel makes these profiles especially resistant to damage caused by transport, fitting and operation.

### HR 116 A, aluminium

The robust profile HR 116 A is ideal for industrial halls with large structural openings. The Stucco-textured surface features a special texture that makes your door less sensitive to visual damage.

Profile type	Decootherm S	HR 116 A
Material	Steel	Aluminium
Surfaces without colour coating	–	Stucco-textured without protective paint
Surfaces with colour coating	Exterior and interior with identical colour coating to choose	Exterior and interior with identical colour coating to choose
Standard colours	RAL 9002 RAL 9006 RAL 7016	RAL 9002 RAL 9006
Preferred colours	–	•
Special colours	–	•
Profile height	109 mm	119 mm
Curtain weight	Approx. 10.3 kg/m <sup>2</sup>	Approx. 10.0 kg/m <sup>2</sup>
Wind load class 2 up to a door width of	8000 mm	11750 mm
Heat transmission EN 12428 (single profiles)	3.9 W/(m <sup>2</sup> ·K)	5.3 W/(m <sup>2</sup> ·K)
Door type	CS rolling shutter Classic rolling shutter SR9000 rolling shutter	Classic rolling shutter
Windows	–	•

- Optionally available
- Not available

# Coloured doors

Create attractive accents

**High-grade colour coating**  
Protection against abrasive wear



## Matching door colours for facade

Coloured doors are increasingly used as design elements in modern industrial and commercial architecture. On account of their size alone, industrial rolling shutters already play a key role in determining the visual appearance of the facade. Hörmann therefore offers rolling shutters and rolling grilles in well approx. 200 RAL colours.

## High-grade colour coating



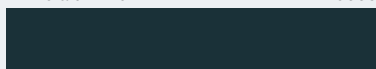
Coil-coated rolling shutter laths provide long-term protection against adverse weather effects for surface finishes. Additional protective paint with polyamide particles reduces abrasion and noise. All curtain and door types feature a bright-rolled bottom profile.

## Special colours according to RAL (for HR 116 and HR 120)





The colours shown are subject to the limitations of the printing process and cannot be regarded as binding. All colours based on RAL. Slight colour variations are permissible.

### Decotherm S standard colours

	Grey white	RAL 9002
	White aluminium	RAL 9006
	Anthracite grey	RAL 7016

### HR 116, HR 120 standard colours

	Grey white	RAL 9002
	White aluminium	RAL 9006

### HR 116, HR 120 preferred colours

	Grey aluminium	RAL 9007
	Terra brown	RAL 8028
	Leaf green	RAL 6002
	Gentian blue	RAL 5010
	Flame red	RAL 3000
	Anthracite grey	RAL 7016

# Impossible to force open!

Increase the security of your property



External view

## Lockable bottom profile with profile cylinder

Actuation either from the interior and exterior or only from the interior. available for CS rolling shutters and rolling grilles



Internal view



## Shootbolt

The shootbolts are fitted on the interior left and right ends of the bottom profile. available for CS rolling shutters and rolling grilles

# The safety of Hörmann rolling shutters and rolling grilles is certified



**Safety features according to European standard 13241-1 Hörmann products are tested and certified for:**

- **Anti-fall safeguard**
- **Trap protection**
- **Trap guard**

Hörmann rolling shutters and rolling grilles work safely during all opening and closing phases – whether manually-operated or power-driven. In doors with an impulse control, the specified dynamic closing forces are reliably maintained through monitoring systems with an integrated self-test function. At Hörmann, the door and operator are perfectly matched to each other, tested by TÜV for your safety and in compliance with the relevant standards.

**It pays to compare!**

## Rolling grilles in public, easily accessible areas

Special safety equipment is required in areas frequented by children, who may hang on the rolling grille.

With rolling grille CS with operator WA 300 R S4, the safety requirements according to DIN 13241-1 are met thanks to the standard power limit in the “Open” direction.

Lintel trap guards always need to be fitted on classic rolling grilles with impulse controls.

## Anti-fall safeguard



### Integral catch safety device in direct drive operators

The device offers especially good absorption, a large amount of power reserve and reliably prevents the door curtain from falling.

### Separate catch safety device for chain drive and tubular operators

Just like the integral version, this is a high-performance device that responds as soon as the speed limit is fractionally exceeded.

**With the CS rolling shutter, the doubly secured tension spring assembly prevents the door from falling.**

## Trap protection and trap guard



### Trap protection

Black plastic strips on the edges of the side guide protect against cuts.



### Curtain cover

The optional curtain cover for door types CS and classic prevents operators from reaching into the hazard area of the door curtain in accordance with the EN 13241-1 requirements.



### Safety equipment

Closing edge safety device, lintel trap guard and through-traffic photocell are self-testing before and during every shutter cycle. If a malfunction is detected in just one of the units, the shutter's control system automatically switches to press-and-hold operation.

### Safety requirements

**Please note the mandatory annual inspection for all power-driven doors.**

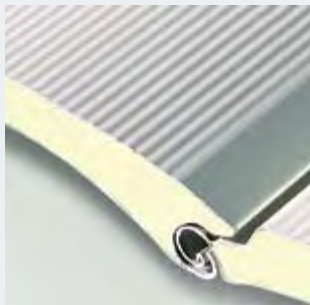
# Well thought-out designs with convincing performance properties

Performance characteristics according to European standard 13241-1 Hörmann products are tested and certified for:

- Thermal insulation
- Acoustic insulation
- Sealing
- Wind load

Thanks to innovations and continuous further developments, rolling shutter construction at Hörmann has been ahead of its time for years. Performance criteria in accordance with European standards have been integrated into these developments with convincing results.

## Thermal insulation and acoustic insulation



Decotherm S



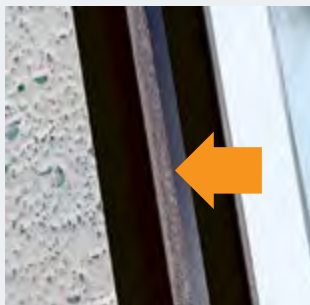
### Thermal insulation

Minimal thermal bridges and use of fine-pored PU rigid foam infill ensure good thermal insulation in all double-skinned door profiles compared with other rolling shutters.

### Acoustic insulation

Curtain and sealing technology used around the entire shutter reduce noise from both outside and inside.

## Sealing

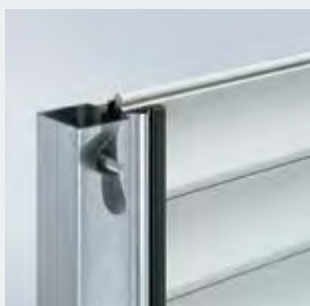


Bristle seal



Double-skinned classic rolling shutters provide an all-around tight fit. A frost-proof flexible lip seal is situated along the bottom edge. A flock-coated special lintel seal and bristle seals down the side guides provide added sealing.

## Stability



Classic rolling shutter Decotherm S with steel wind lock



Robust wind locks and deflection resistant bottom profiles enable your door to withstand high wind loads.

# Compatible System Solutions

For high functional door safety





## Better with a system

This means the components have been optimally adjusted to work together, ensuring the door's functional safety.

The uniform operating concept and the 7-segment displays facilitate daily use. Fitting is also simplified thanks to uniform housing and cable sets. This way, all Hörmann products work together optimally and efficiently:

- Industrial doors
- Loading technology
- Operators
- Controls
- Accessories

# Operator WA 300 R S4

For CS rolling shutters / rolling grilles



## Soft start and soft stop

The WA 300 R S4 operator's standard soft start and soft stop functions ensure quiet door travel, reducing wear on the door and operator.

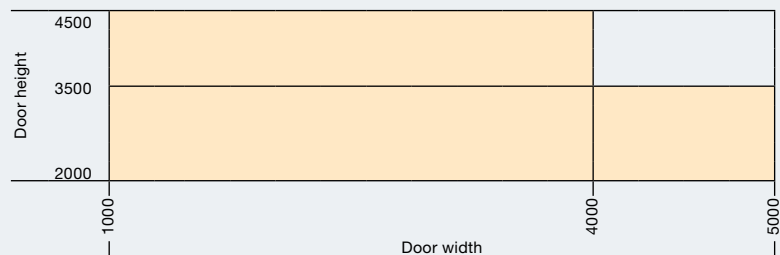
## Power limit as standard

Thanks to the standard power limit in the "Open" and "Close" directions, the CS rolling shutter/rolling grille features high safety during opening and closing processes. In addition, the specified curtain variants and size ranges (see fig. "Impulse operation without closing edge safety device") do not require the installation of a closing edge safety device to meet the requirements of DIN EN 12453. Operator fitting is very easy, since no components need to be fitted on the curtain. The low amount of effort required for fitting, repair and other services provides additional savings.



## Impulse operation without closing edge safety device

Size range for CS rolling shutters/rolling grilles with Decotherm S curtain or rolling grilles HG-L.



## Release directly on the operator as standard

With the integrated maintenance release, the door can be switched to manual operation at any time. This allows the door to remain fully functional, even in the event of a power failure. The release **1** can be converted to a secured release **2** at any time so that the operator can be disengaged conveniently from the floor.



## Easy fitting

The optional fitting gearbox facilitates fitting **3** even further, since a forklift is no longer required.

